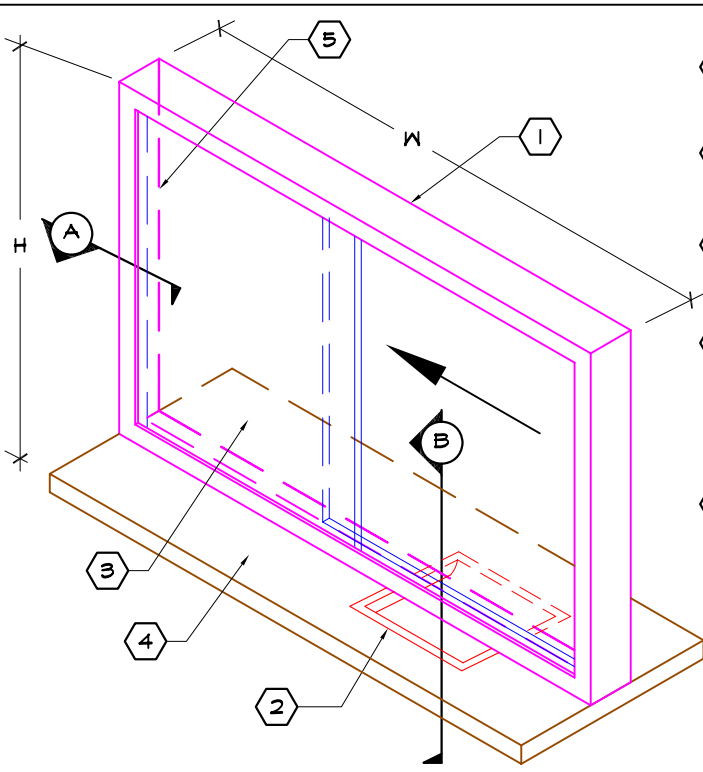


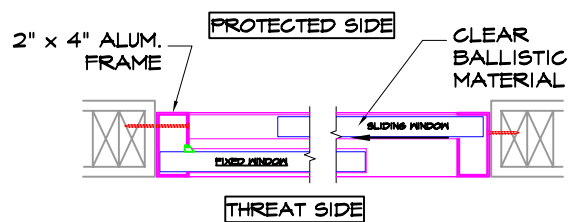
K:\DRAWINGS\WEB DRAWINGS\TWS.dwg



- NOTES:
- ① ALUMINUM BALLISTIC CAPTURE FRAME W/ POWDER COAT FINISH
 - ② 16 GAUGE STAINLESS STEEL DEAL TRAY
 - ③ CLEAR BULLET RESISTANT MATERIALS SPECIFY UL 752 LVLS I THRU III (HIGHER LVLS AVAIL. IN GLASS CLAD POLY)
 - ④ BALLISTIC LINED COUNTER TOP MADE OF PLASTIC LAMINATE W/ PHENOLIC BACKING MULTIPLE COLORS (STAINLESS STEEL COUNTER ALSON AVAILABLE UPON REQUEST)
 - ⑤ MOUNTING HOLES ON PROTECTED SIDE OF THE FRAME FOR ADDED SECURITY

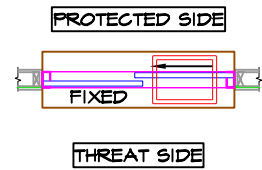
ISOMETRIC

NTS



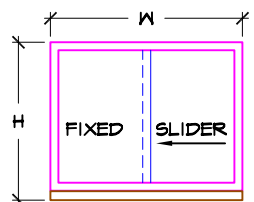
A DETAIL @ JAMB

NTS



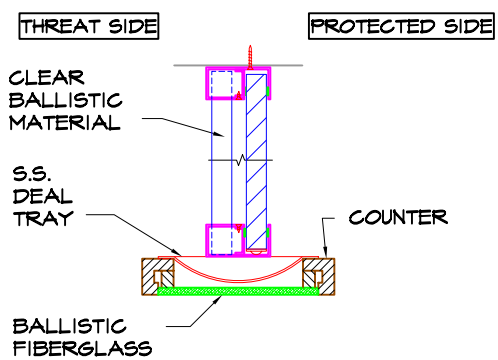
PLAN

NTS



ELEVATION

REQUIRED FINISH OPENING = NTS
 WIDTH + 1/4"
 HEIGHT + 1/8"



B SECTION @ DEAL TRAY

NTS

TW VS-SS- (TW= TRANSACTION WINDOW, A= TYPE OF VOICE PORT, SS= FRAME MATERIAL)

SLIDING TRANSACTION WINDOW. SPECIFY LEVEL OF PROTECTION. CALL FOR MAXIMUM SIZE

SLIDING TRANSACTION FRAME ALSO AVAILABLE IN STAINLESS STEEL. SPECIFY TWS-SS



MODEL # TWS
 BULLET RESISITANT SLIDING TRANSACTION WINDOW
 WITH ALUMINUM FRAME