

FEATURES

Fiberglass Armor is a reinforced structural polyester laminate that exhibits unique bullet resisting characteristics. These flat, opaque panels are press molded between plates at high pressure and elevated temperature. Fiberglass structural armor is designed to progressively delaminate as a bullet penetrates. The hard surface and toughness of the material cause the bullet to distort and flatten. As the bullet penetrates, the layers of (fiberglass) reinforcement within the laminate pull apart in a controlled manner such that the energy of the bullet is dissipated within the laminate. More energy is consumed as the bullet penetrates the high-strength glass fibers. No spalling occurs.

MARKET SERVED

Teller Counters | Gas Station | Convenience Store | Pay Counters | Remote Electronic Building | Secure Rooms and Buildings | Judge Benches | Reception Areas |

SHEET SIZES AVAILABLE

13' X 8' | 13' X 10' | 4' X 8' | 4' X 10' |

PROPERTIES & SPECIFICATIONS

Protection	.357 Magnum
Ballistic Data	Velocity 1: 1250 ft/s Velocity 2: 1395 ft/s
Shots	3
Light Transmission	0.0%
Thickness	3/8"
Weight	3.0 lbs/sqft
Standard Color	White
Tensile Strength	45 KSI
Tensile Modulus	3.75 x 10 ⁶ PSI
Flexural Strength	70 KSI
Flexural Modulus	2.7 x 10 ⁶ PSI
Compressive Strength	70 KSI
IZOD Impact Strength	52 Ft. Lb./In.
Water Absorption	<1.4% By Weight
Specific Gravity	2
Barcol Hardness	50
CoEf. Of Thermal Exp.	2 In./°C x 10 ⁻⁵
Thermal Conductivity	2 BTU/Hr/Ft. ² /In./°F

BALLISTIC AND FORCED ENTRY RATING

- U.L 752 / Level 2
- N.I.J. 0108.01 / Level II

STANDARDS

- UL-94 V0 Flame Rating

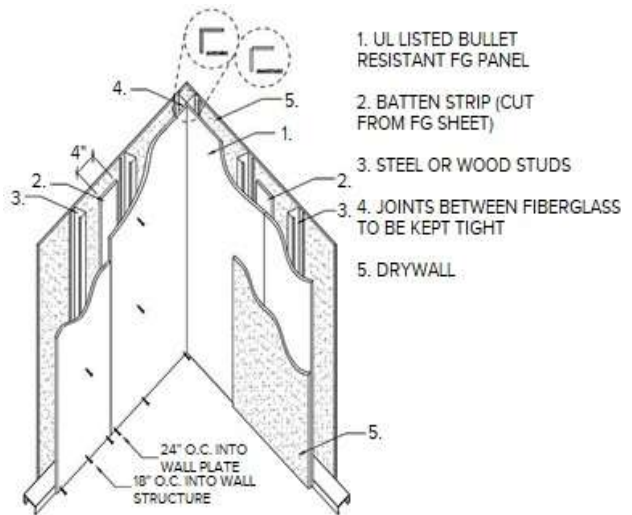
Bullet Guard

P: 800.233.5632 | info@bulletguardmail.com | Since 1976 | 3963 Commerce Dr. W. West Sacramento, CA 95691

Proprietary information not for public distribution

BALLISTIC FIBERGLASS ARMOR

PRODUCT: BGAA-02



INSTALLATION

- For cutting, carbide or ceramic grit saw blades are recommended. Use carbide tooling when drilling, spot facing, or counter boring
- Butt joints are weak. To reinforce, use 4" strip of same material. No rigid high-density material should be used adjacent to panel's inner surface. Allow a minimum gap of 1/4"

STANDARD WARRANTY

12-month limited warranty. Does not cover damage from neglect, abuse, vandalism, improper maintenance, or any other cause not arising out of defects in material or workmanship. The warranties stated replace and exclude all other warranties. The warranty is limited to replacing products that fail to meet specification, defective in quality, or workmanship at time of delivery. TSS is not responsible for (re)installation expenses or any direct or indirect losses which may result from a defective product. TSS reserves the right to field inspect any product alleged to be defective. Buyer is responsible for any consequences from product use.